

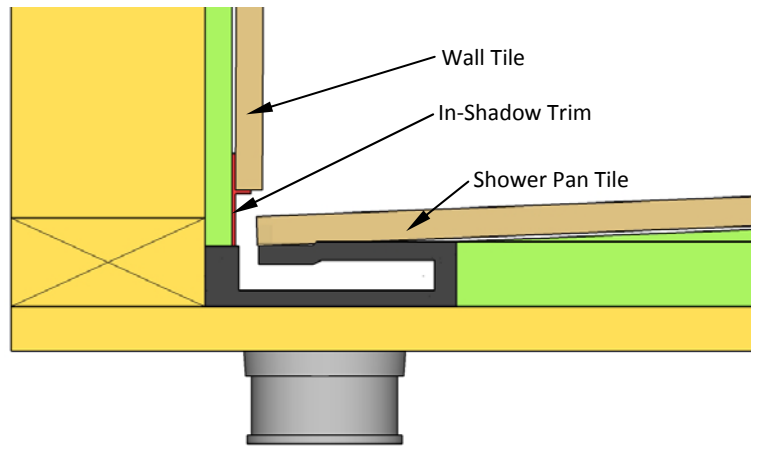
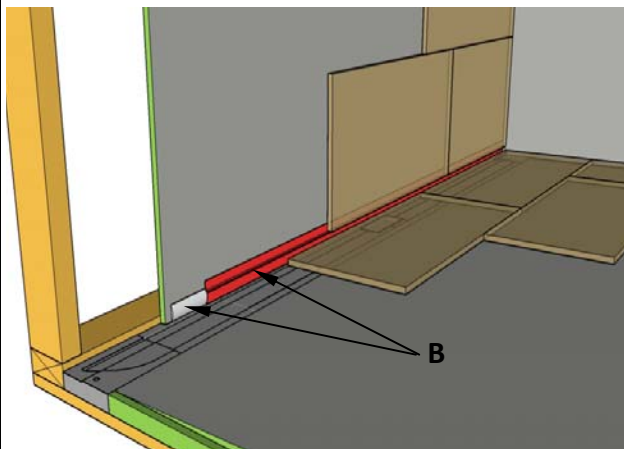
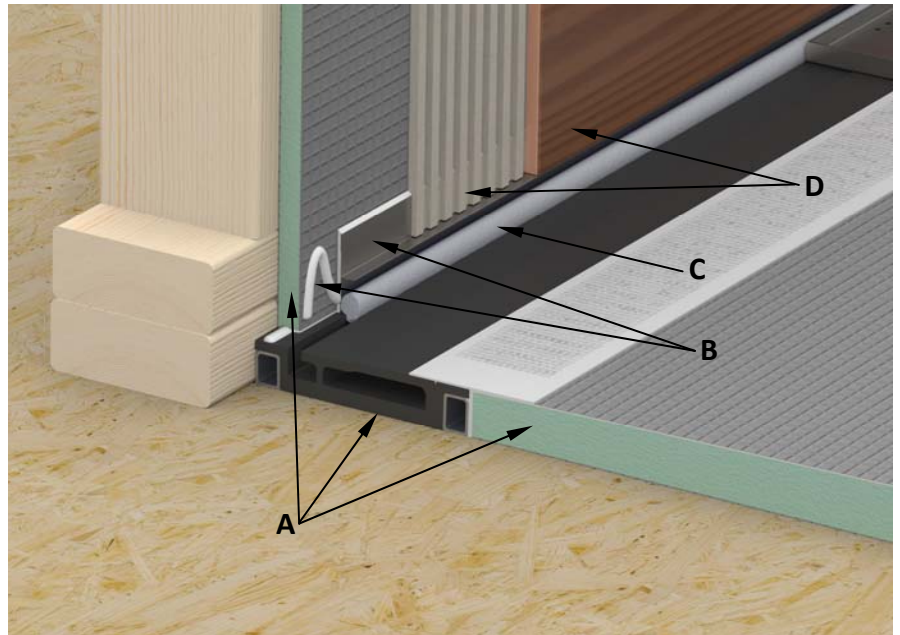
HYDRO-BLOK SINGLE SLOPE SHOWER - LINE DRAIN TILE TRIM KITS

In-Shadow Trim allows line drain slot to be concealed under the vertical wall tile



In-Shadow Trim Kit Includes:

- ◆ 2 pcs In-Shadow trim 35 3/4" length
- ◆ Metal cut-off wheel
- ◆ Temporary foam backer rod



- A. Install Hydro-Blok line drain, shower pan and wallboard per typical specs. Use included cut-off wheel to cut trim to length as needed.
- B. Run a heavy continuous bead of Hydro-Blok sealant along the wallboard face that will receive the In-Shadow trim. Firmly press trim piece into sealant bead and adjust into final position before sealant sets up. Trim pieces should run the entire length of line drain.
- C. Insert supplied round foam backer rod into drain slot. This is temporary and will keep debris out of drain slot during tiling.
- D. Apply thinset over face of trim and onto wallboard for setting tile. Bottom edge of tile should rest on horizontal lip of trim piece. Do not use sealant on this bottom edge of tile. This will allow for any water to weep under tile and down the drain if necessary.

**** PLEASE NOTE: In-Shadow trim can be used with 1/4" - 3/8" shower pan tile. When cutting trim to desired length it is best practice to place all cut edges at the outer ends of line drain. This will allow factory edges to be butted together when using multiple trim pieces.**

Trim pieces are made from high quality 304 Stainless Steel .25mm thick

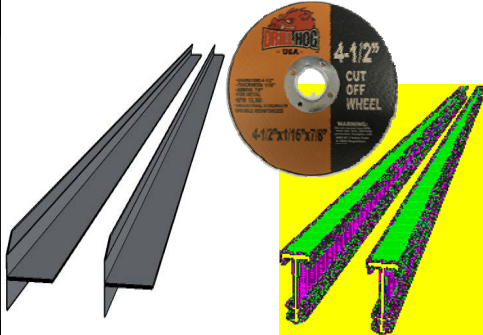
Line Drain Trim Kit

Part Number:
HBINSHADOW

HYDRO-BLOK SINGLE SLOPE SHOWER - LINE DRAIN TILE TRIM KITS

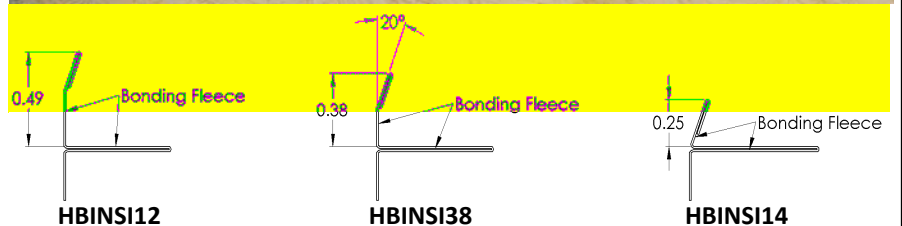
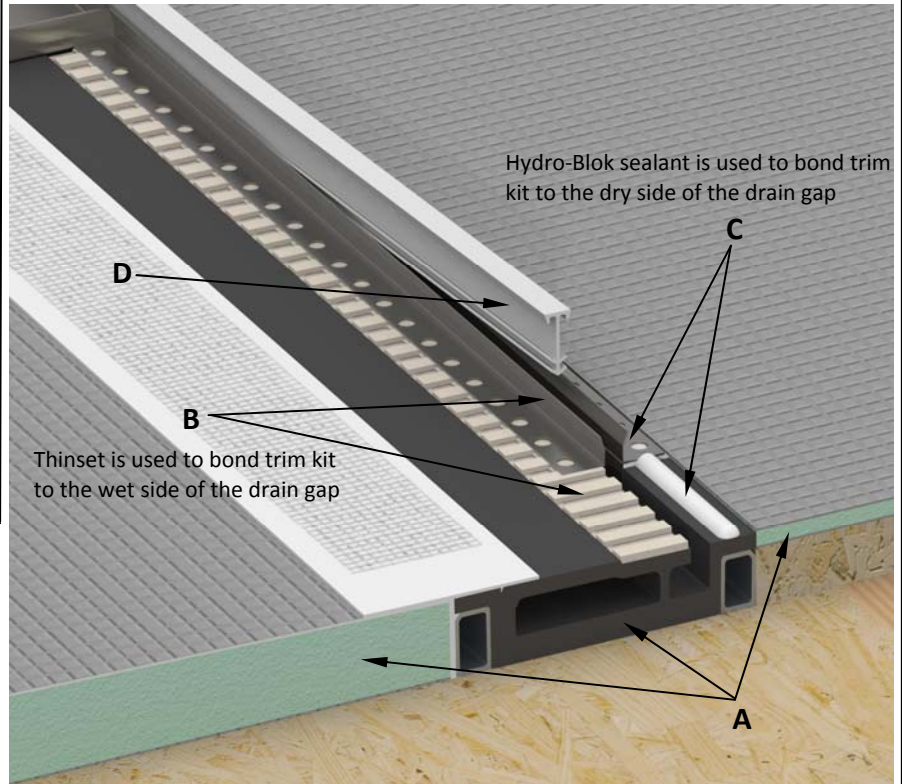
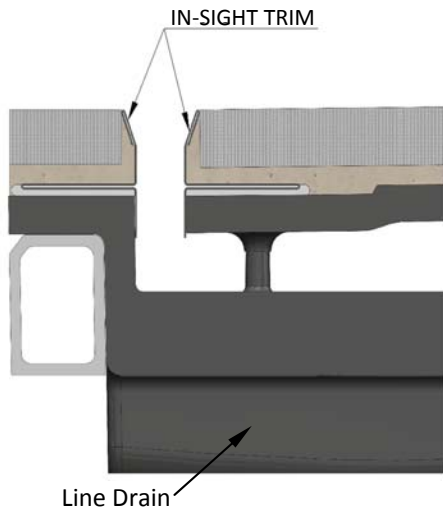
In-Sight Trim gives the option of having a metal finished edge along the length of the line drain gap

****TRIM KIT IS REQUIRED AND MANDATORY WHEN DRAIN IS LOCATED AT SHOWER ENTRY THRESHOLD****



In-Sight Trim Kit Includes:

- ◆ 2 pcs In-Sight trim 35 3/4" length
- ◆ Metal cut-off wheel
- ◆ Temporary gap spacer/alignment sticks



Trim pieces are made from high quality 304 Stainless Steel .25mm thick

- Install Hydro-Blok line drain, shower pan and wallboard per typical specs. Use included cut-off wheel to cut trim to length as needed.
- On shower/wet side of drain gap use thinset along entire length of drain to bond trim piece to drain body. Firmly press trim into thinset and position in place. Remove any excess thinset from drain slot if necessary.
- On dry side of drain gap run a continuous bead of Hydro-Blok sealant along the entire length of drain to bond trim piece to drain body. Firmly press trim piece into sealant bead and adjust into position. Trim pieces should run the entire length of line drain.
- Before thinset & sealant sets up**, insert supplied plastic spacer sticks into gap between the trim pieces. This will properly space the trim pieces and hold them in position while thinset and sealant cures. Leave this temporary spacer in place while tiling to keep debris out of drain slot. **Remove plastic gap spacer sticks before putting shower into use.**

**** PLEASE NOTE: When cutting trim to desired length it is best practice to place all cut edges at the outer ends of line drain. This will allow factory edges to be butted together when using multiple trim pieces.**

Line Drain Trim Kit

Part Number:

HBINSI12 (1/2")

HBINSI38 (3/8")

HBINSI14 (1/4")